



South LAC Community Engagement

Beauchief & Greenhill • Gleadless Valley • Graves Park • Sharrow & Nether Edge

Contents

About our Engagement Activities

Section 1

Who we spoke with

Section 2

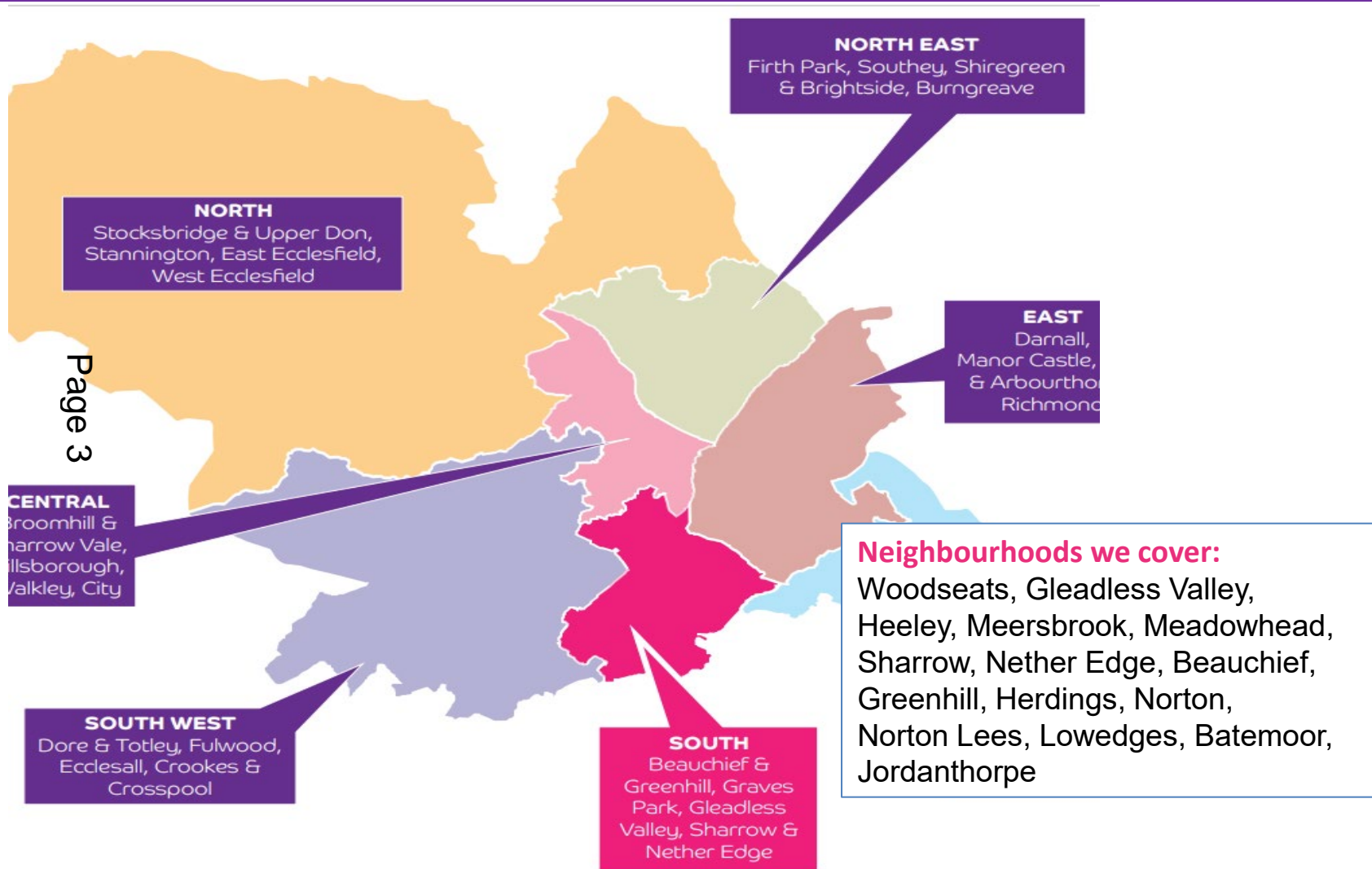
Page 2
Feedback

Section 3

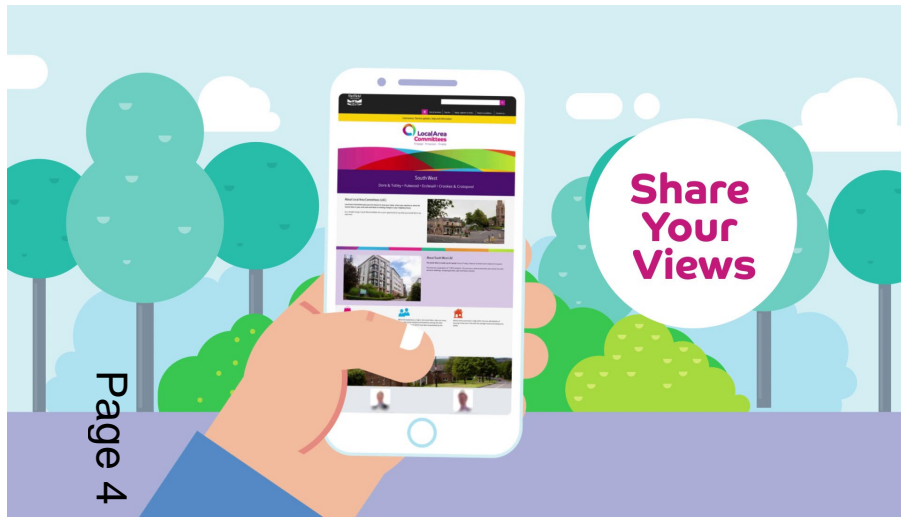
Key themes

Section 4

About Our Engagement Activities



About Our Engagement Activities



In Person Surveys / Conversations

Led by 7 local VCFS organisations
665 responses

Local Businesses

Elected Members & LAC Team spoke to local businesses in Sharrow, Woodseats and Gleadless Valley

Online Citywide Survey

31st August to 31st October 2021
Paper copies also made available
976 responses

South LAC Public Meeting

Held in Gleadless Valley Methodist Church

Drop ins at Libraries

Supported by LAC Team

Sheffield Equality Partnership

Citywide targeted work with communities less likely to have their voice heard

About Our Engagement Activities



We have spoken with over 1,800 people so far.....

Ward where respondents live (surveys only)

Beauchief & Greenhill	21%	Gleadless Valley	26%
Graves Park	15%	Sharrow & Nether Edge	37%

Who We Spoke With.....

Sexual Orientation

7% respondents identified as lesbian, gay or bisexual

Gender Identity

1% respondents identified as trans (online survey only)

Ethnicity

White British **74%**
Black, Asian, Ethnic Minority **20%**
White (Non - British) **3%**



Age

Page 6

Under 20
5%

Working Age (20-50)
45%

Age 50+
49%



Religion/belief

34% no religion/belief
3% Religious (online survey only)



19% have a disability or long term condition

Sex



36% Male
60% Female
1% Non Binary

Caring status

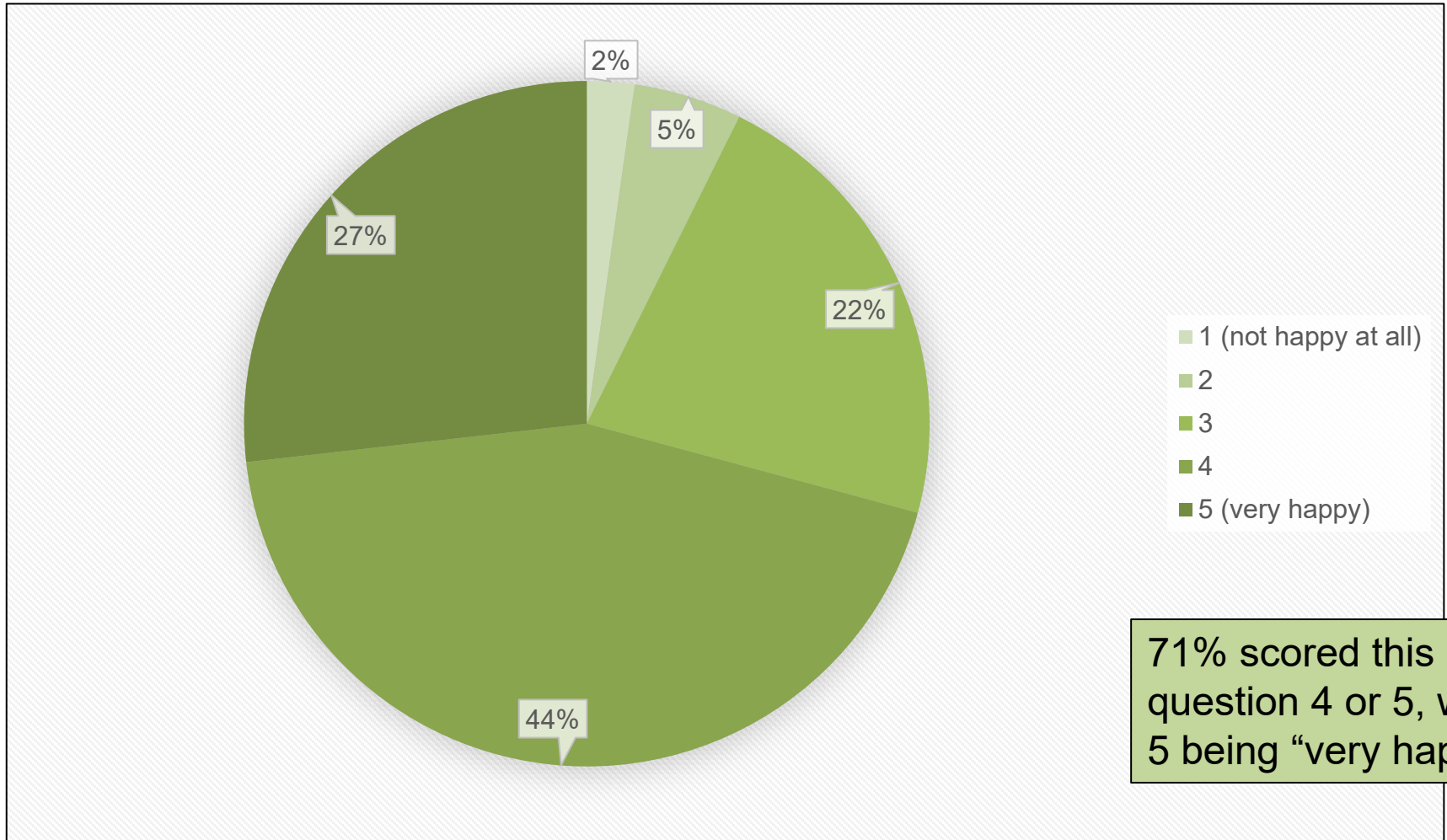
18% said they were unpaid carers

Tenure

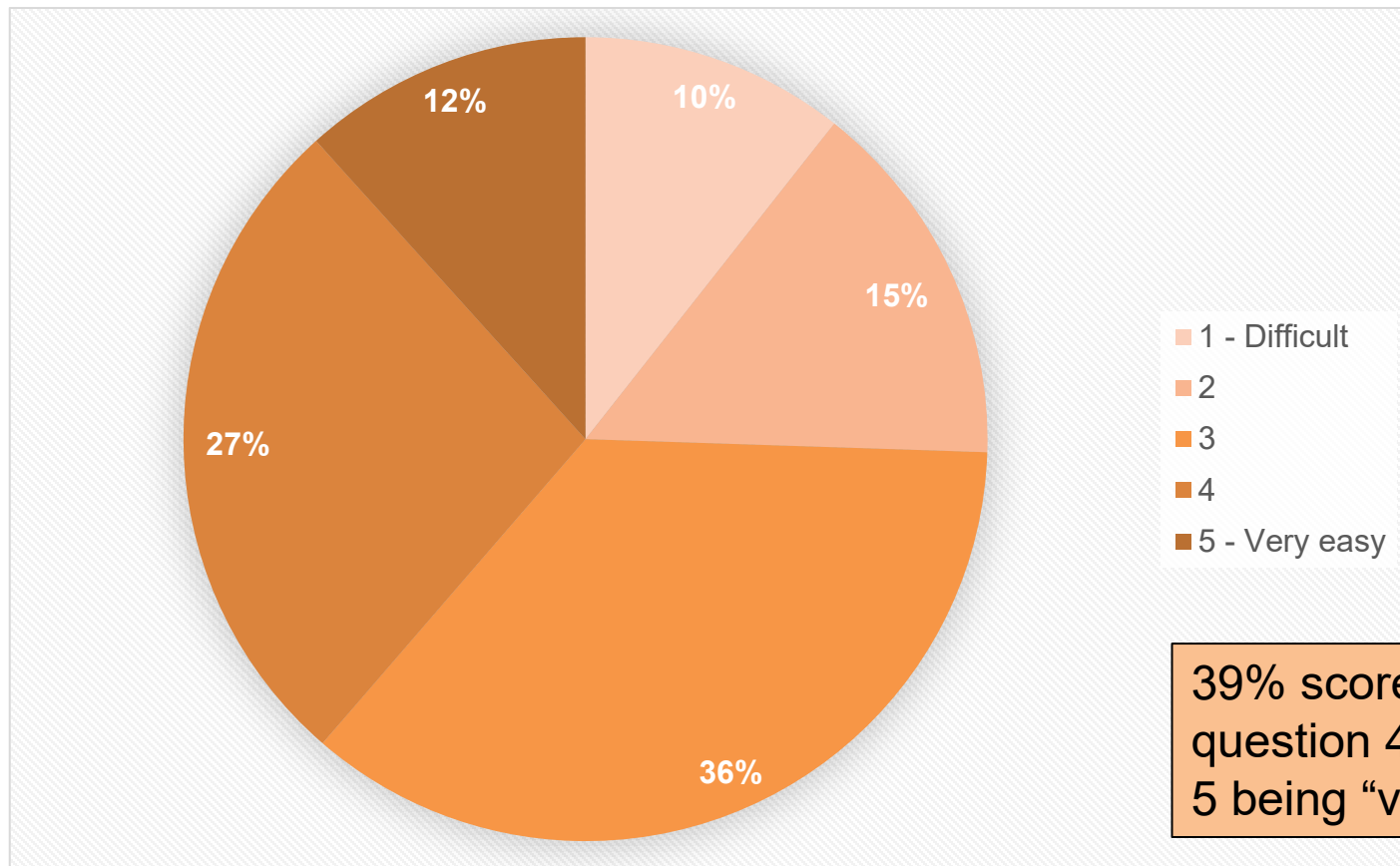


77% are Homeowners
9% Rent from the council
1% Rent from other social landlord
8% are Private Renting
2% living with family (Online Survey only)

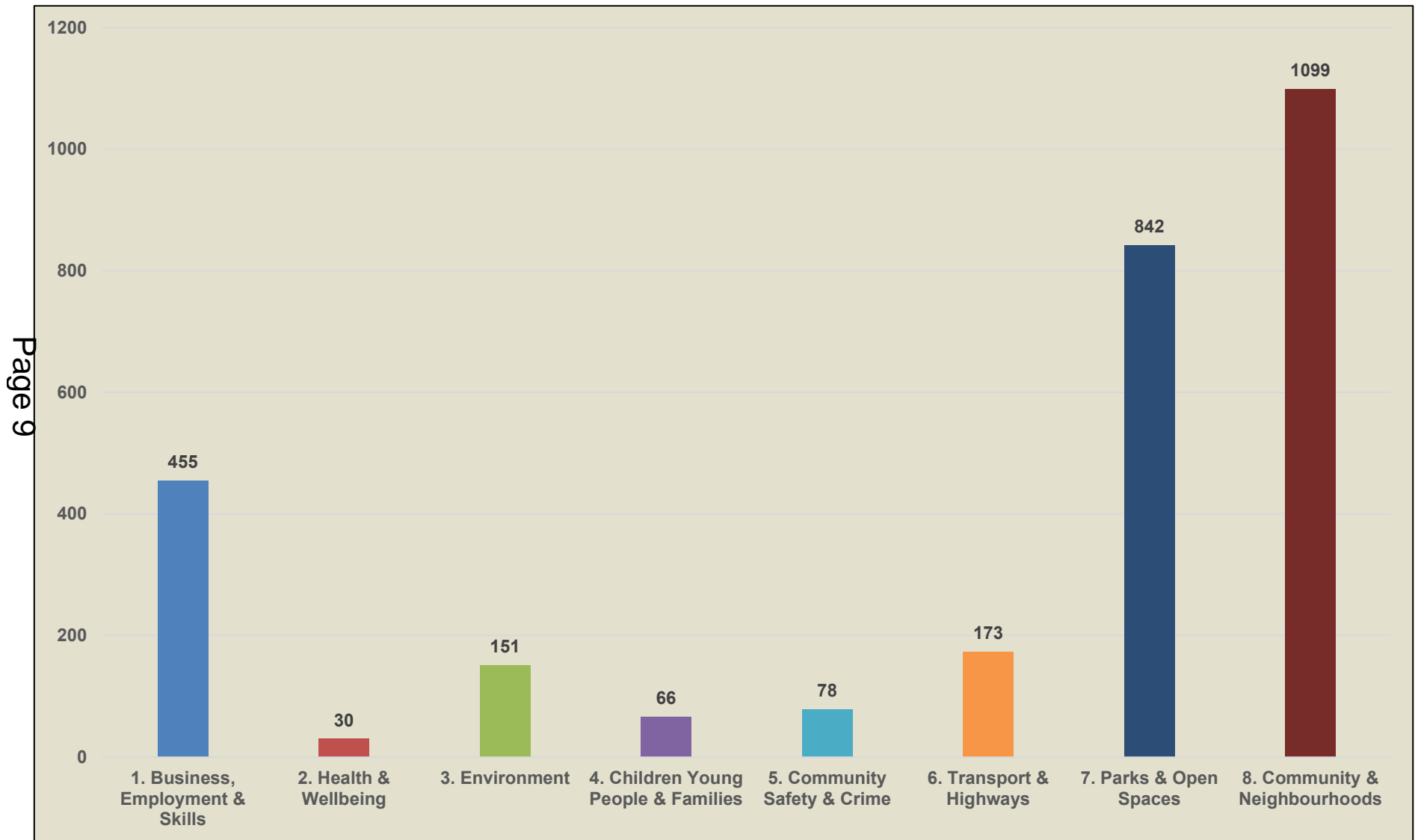
How happy do you feel with your local area where you live?



How easy is it find out about news in your local area? e.g. events / activities



Feedback: Key Themes - Likes



Feedback: Key Themes - Likes



Sense of Community

Over 550 positive comments from people about their community, this included comments about community networks, diversity, neighbours and friends, family, community events and activities and community spirit

Crime & Community Safety

Over 70 comments about people feeling safe in their area or it having low crime levels.

Environment

Over 100 people commented that they liked the trees and street trees.

Public Transport

Over 100 comments in relation to buses and also trams and train in terms of proximity and routes.

Parks & Open Spaces

Over 280 comments about parks, including quality and location, with lots of mentions of Graves, Meersbrook and also Millhouses Parks.

Feedback: Key Themes - Likes



Local Shopping Centres & Businesses
Over 400 people commented on their local shopping area and the types of business, comments included around the number of independent businesses, diversity and proximity of shops, good pubs and restaurants and cafes.

Page 11

Local Community

Over 450 comments in relation to local amenities and where people live, their home and also having access to quiet spaces.

Public Transport

Over 100 comments in relation to buses and also trams and trains in terms of proximity and routes.

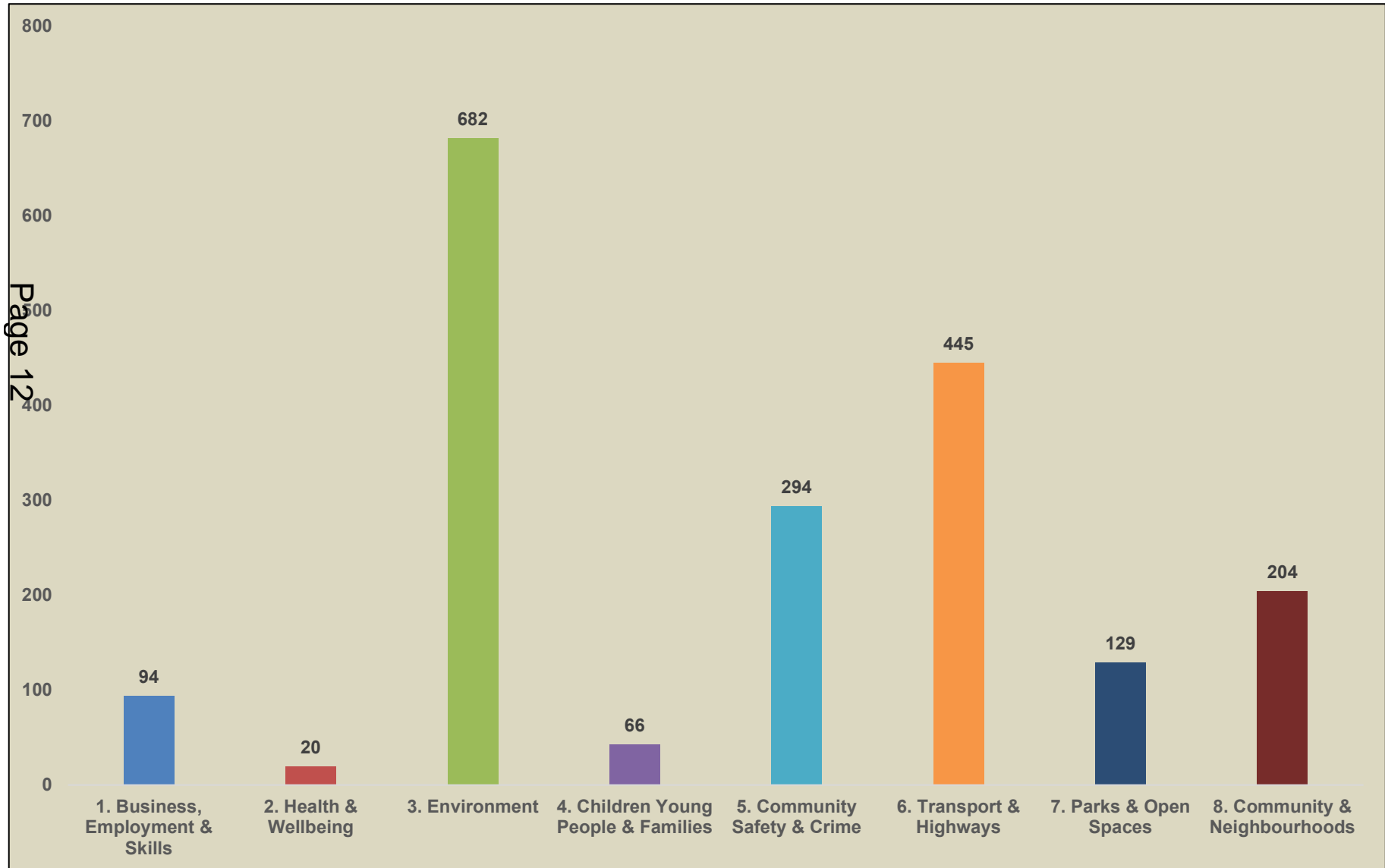
Good Local Schools

Over 50 comments about local schools, people commented on the quality of schools and also their proximity.

Parks & Open Spaces

Over 430 comments about green and open spaces, including local woodlands and the proximity of the countryside / Peak District.

Feedback: Key Themes - Improvements



Feedback: Key Themes - Improvements



Page 1

Crime & Community Safety

Top concerns raised in order of priority:

- Crime
- Police Presence & Patrol
- ASB
- Off-Road Bikes

Crime was the most prominent concern with over 70 comments followed by Police Presence & Patrol with over 50.

Community & Neighbourhoods

Top concerns raised in order of priority:

- Lack of Local Amenities
- Community & Voluntary Groups (more activities)
- Community / Neighbourhood (ASB / Housing stock)
- Lack of Community Assets / facilities
- More festivals / Celebrations & Community Days

Lack of local amenities was the most prominent concern with over 30 comments.

Emerging Themes Based on our Engagement



Environment



Transport & Highways



Community Safety & Crime



Community & Neighbourhoods



Parks & Open Space



Business, Employment & Skills

Some Considerations & Caveats

- **Sample size** – it is still a small sample of the South LAC population
- **Underrepresentation** - Some neighbourhoods and groups unrepresented e.g. those who don't own their own home
- **Gaps** - some very important issues are less prevalent through this engagement e.g. health and wellbeing, children and young people, poverty
- **Variance** – there is some very significant variance across areas / neighbourhoods
- **Evidence** - what else do we know?



This page is intentionally left blank